



Ditec TS 35 is the 230 Vac irreversible telescopic operator for swing gates for frequent use and residential applications.

Quick to install: with the gate closed, fix the motor onto the pillar using the pre-drilled bracket plate, extend the telescopic arm and fasten it to the gate wing.

Reliable and sturdy: stainless steel motor shaft, gears and screw. pre-drilled brackets **thicker** than competitors to withstand more effectively the torsional and shear forces

Kit with advanced accessories: advanced functions available, together with Ditec control and security accessories

EASY
TO INSTALL



RELIABLE
AND STURDY



KIT WITH
ADVANCED
ACCESSORIES



Product range

For wing up to 3,5 m

Ditec TS 35

Technical specifications

Description	TS35ACD - TS35ACS
Electromechanical actuator	irreversible
Maximum load	400 kg x 1,5 m 300 kg x 3,5 m
Motor power feed	230 Vac - 50/60 Hz
Max power	330 W
Max absorption	1.5 A
Max thrust	3500 N
Opening speed	18 s ÷ 22 s / 90°
Maximum stroke	400 mm
Actuator maximum opening	110°
Intermittent operation	S2 = 10 min / S3 = 30%
Service class	frequent, up to 100,000 cycles
Release system for manual opening	key-operated
Operating temperature	-20°C ÷ +55°C in standard conditions (-35°C ÷ +55°C with NIO system)
Protection rating	IP33
Weight (kg)	4
Control panel	LCA70 or LCA80

	TS35ACD - TS35ACS	TS35ACD - TS35ACS
TECHNICAL FEATURES		
Control panel	LCA70 for 1 or 2 230 Vac motors with built-in radio	LCA80 for 1 or 2 230 Vac
Radio frequency	433.92 MHz as standard 868.35 MHz with ZENPRS or with BIXPR2	433.92 MHz with ZENRS or with BIXR2 868.35 MHz with ZENPRS or with BIXPR2
433MHz/868MHz interchangeable receiver module	■	■
Mains power supply	230 Vac - 50/60 Hz	230 Vac - 50/60 Hz
Motor power supply	230 Vac; 2 x 2 A max; 1 x 4 A max	230 Vac; 2 x 2 A max; 1 x 4 A max
24 Vdc and 24 Vac accessories power supply	0,3 A	0,5 A
Stroke control	end stop detection and time calculation	end stop detection and time calculation
Limit switch provision		■
Energy saving		■
Temperatura di funzionamento	-20°C ÷ +55°C in standard conditions [-35°C ÷ +55°C with NIO enabled]	-20°C ÷ +55°C in standard conditions [-35°C ÷ +55°C with NIO enabled]
Control panel protection level	IP55	IP55
Control panel dimensions (mm)	187x261x105	187x261x105
INPUTS		
Opening control	shared with step-by-step control, which can be selected via display	■
Partial opening control	■	■
Close control	shared with emergency stop, which can be selected from the display	■
Stop control	via radio or shared with partial opening control, which can be selected from the display	■
Step-by-step control	■	■
Hold-to-run control	■	■
Automatic closing contact management	shared with partial opening control, selected via display	■
OUTPUTS		
Flashing light	230 Vac 25 W max	230 Vac 25 W max
Electrically operated lock	12 Vac 15 W max	12 Vac 15 W max
8.2 KΩ-resistance safety edge	■ with accessory	■ during opening and closing (terminal connectors already integrated in the control panel)
24 Vdc number of configurable outputs	1	2
- gate-open warning light (ON/OFF)	■	■
- gate-open warning light with proportional blink rate	■	■
- courtesy light	■	■
- 24 Vdc led flashing light	■	■
PROGRAMMABLE FUNCTIONS		
Configuration of programmable functions	display and navigation keys	display and navigation keys
Force adjustment	■	■
Approach speed	adjustable	adjustable
Thrust on obstructions	adjustable	adjustable
Braking/Slowing down	adjustable	adjustable
Stop approach	adjustable	adjustable
Operation time	adjustable	adjustable
Automatic re-closing time	adjustable	adjustable
Compatibility with hydraulic motors	■	■
Heavy traffic management	■	■
Integrated datalogging (counters and recent alarm history)	■ can be viewed on display	■ can be viewed on display
FW update	■ using Amigo SW and USBPROG	■ using Amigo SW and USBPROG
SAFETY AND PROTECTION FUNCTIONS		
Emergency stop	■	■
Safe closing (inversion)	■	■
Safety Test Facility (for automatic safety devices)	■	■
ODS – Obstacle Detection System (causes the gate to stop or to reverse movement when an obstacle is detected)	■	■
NIO - Antifreeze system	■	■
OPTIONAL ACCESSORIES		
Magnetic loop detector	■ with LAB9	■ with LAB9

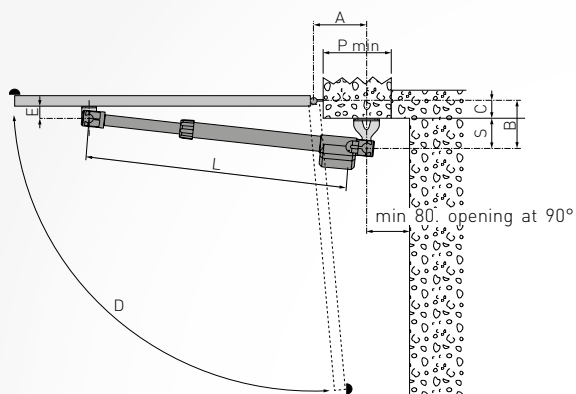
Ditec TS 35 - Typical configuration



The automation system can be completed with Ditec command, control and safety devices.

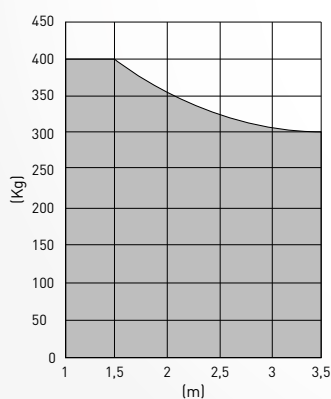
■ radio controls > page 90 ■ switches > page 96 ■ photocells > page 100 ■ flashing lights > page 102 ■ safety edges > page 103

Installation measurements



A	B	C	S	D	E	L	P min
150	130	15	115	110°	46	1120	170
160	120	30	90	105°			180
160	160	45	115	100°			180
100	165	50	115	90°			120
130	160	70	90	95°			150
120	200	85	115	95°			140
150	200	85	115	90°			170
130	190	100	90	95°			150
130	220	105	115	90°			150

Operation limits



Dimensions

