

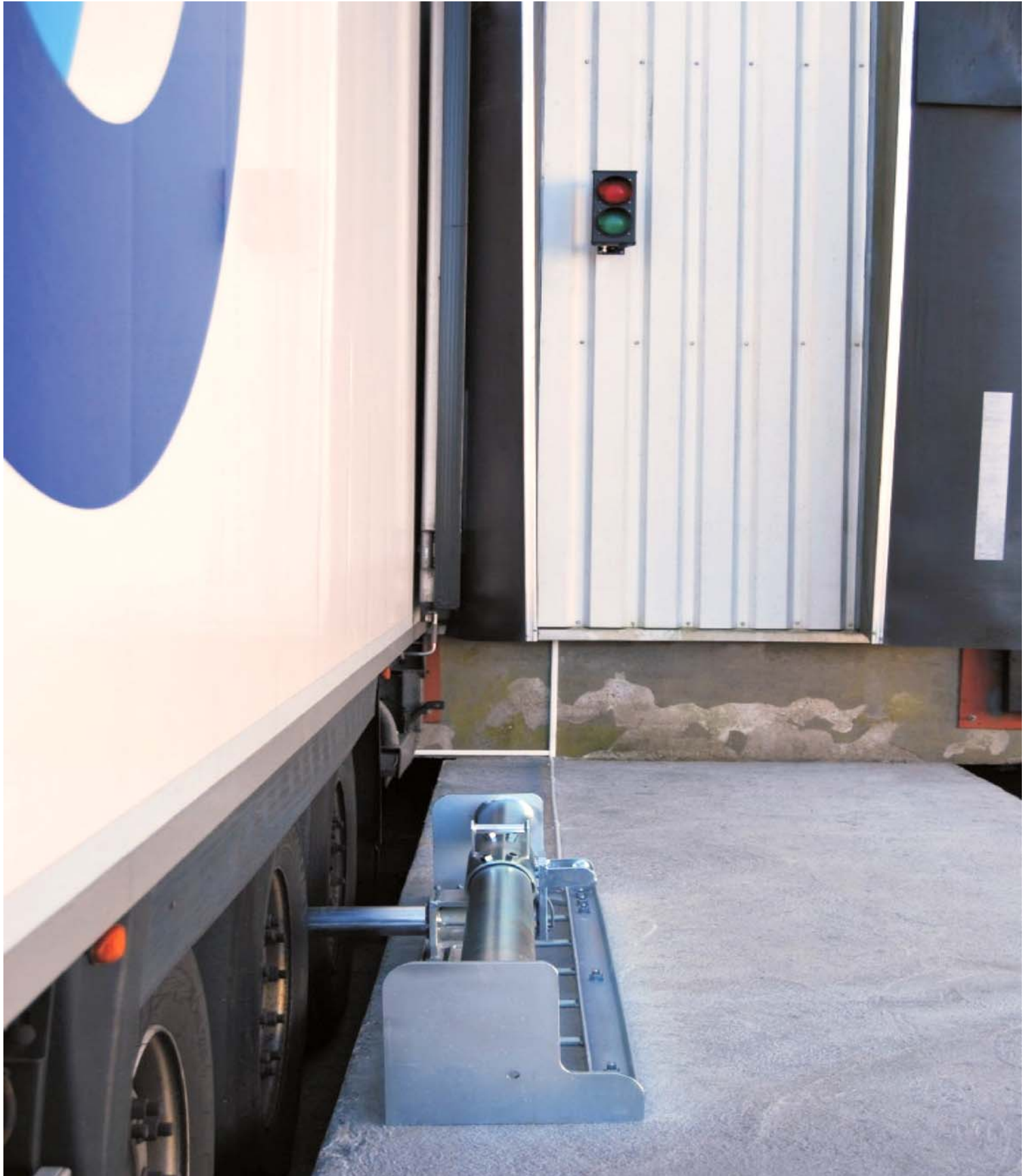
Product datasheet

Dock equipment

ASSA ABLOY DE6090MR Manual Restraint

ASSA ABLOY
Entrance Systems

The global leader in
door opening solutions



Copyright and Disclaimer Notice

Although the contents of this publication have been compiled with the greatest possible care, ASSA ABLOY Entrance Systems cannot accept liability for any damage that might arise from errors or omissions in this publication. We also reserve the right to make appropriate technical modifications/replacements without prior notice.

No rights can be derived from the contents of this document.

Color guides: Color differences may occur due to different printing and publication methods.

No part of this publication may be copied or published by means of scanning, printing, photocopying, microfilm or any other process whatsoever without prior permission in writing by ASSA ABLOY Entrance Systems.

Copyright © ASSA ABLOY Entrance Systems AB 2006-2018.

All rights reserved.

ASSA ABLOY, Besam, Crawford, Albany and Megadoor as words and logo are trademarks belonging to the ASSA ABLOY Group.

Contents

Copyright and Disclaimer Notice	2
Contents	3
1. Description	4
1.1 Mode of operation	4
1.2 Overview	6
1.3 Traffic Lights	6
1.4 Control Box.....	6
1.5 Standard	6
1.6 Options	6
2. Dimensions	7
2.1 Dimensions H50	7
2.2 Dimensions H50 XL	7
2.3 Dimensions H400.....	8
3. Technical Specifications	9
4. Service you can rely on	10
Index	11

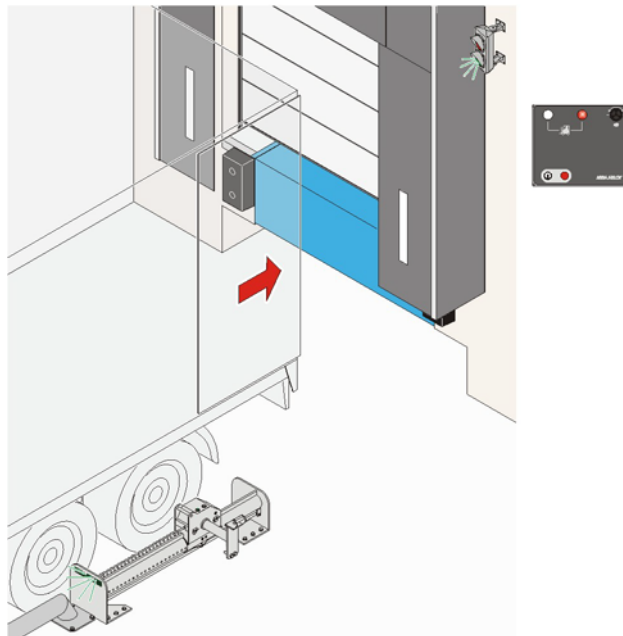
1. Description

The ASSA ABLOY DE6090MR Manual Restraint is a wheel restraint system that helps to prevent accidents and injuries at the loading bay. During the loading operation there is a risk that the trailer can roll away unintentionally from the dock due to the impact from the forklift truck traffic, a problem known as vehicle creep. Another ever-present danger is premature drive-off, when a truck leaves too early due to misunderstanding, incorrect instruction or a lack of communication with the driver. For both risks the ASSA ABLOY DE6090MR Manual Restraint is the ideal solution.

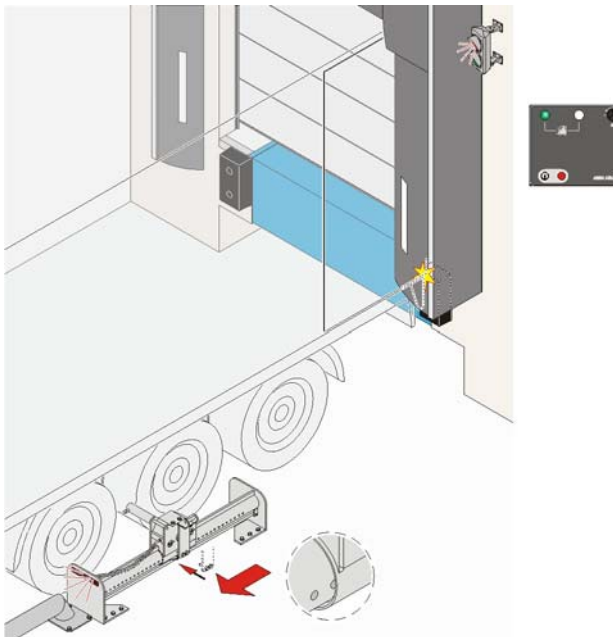
During the dock-in procedure the ASSA ABLOY DE6090MR Manual Restraint acts as a parking guide for the reversing truck. This reduces the possibility of damage to the truck, dock shelter, dock leveler or the building. The dock leveler control box is blocked until the rear wheel of the truck is detected and secured by the blocking arm. This interlocking function as well as the exterior traffic light system completes the whole safety package. The ergonomic design makes it possible to activate the restraint system by only one person with minimal forces.

The unique outstanding feature of the ASSA ABLOY DE6090MR Manual Restraint is an electro-magnetic locking device of the blocking arm. This is automatically activated during the loading operation and makes it impossible to remove the blocking arm too early.

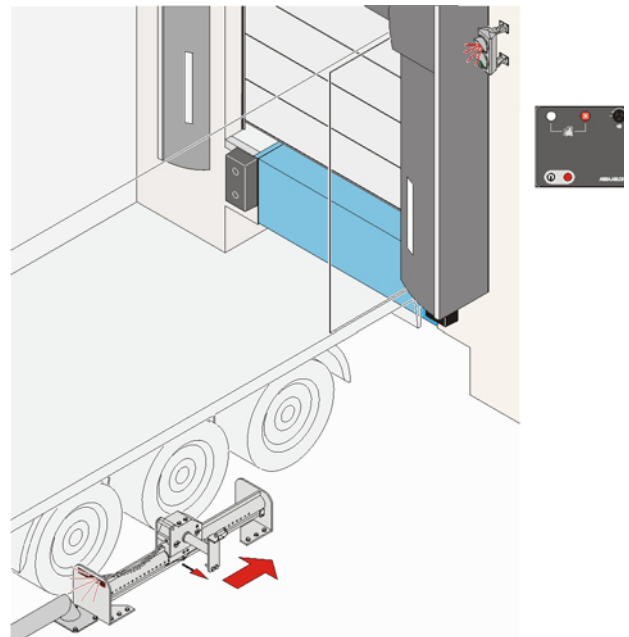
1.1 Mode of operation



- 1) Ready for use condition.
Outside traffic light is green; the truck can reverse backwards to the loading bay.
Inside signal on control box is red, the loading operation cannot be started.
The dock leveler or the sectional door is blocked for use.

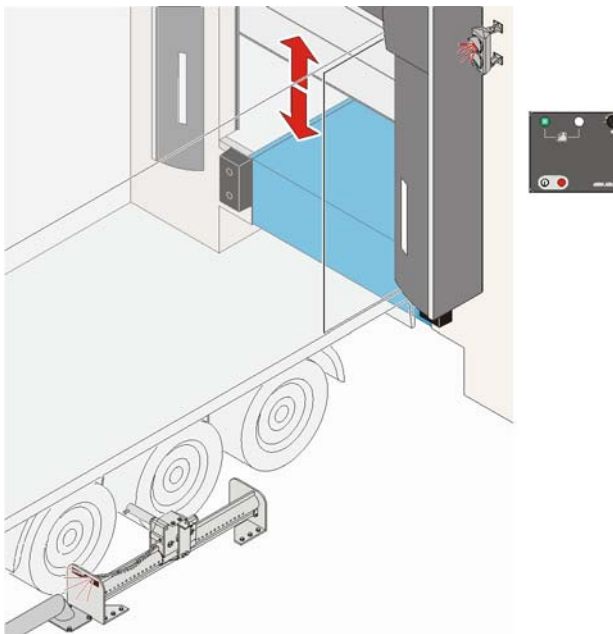


- 2) **Activate the restraint system**
 When the truck is in place, the rear wheel of the trailer is blocked manually.
 The operator moves the carriage along the rail to the right position to activate the blocking arm by a push forward movement.
 Then the outside traffic light switches to red and the inside signal on the control box from red to green.
 Now the dock leveler or the sectional door is released for use.



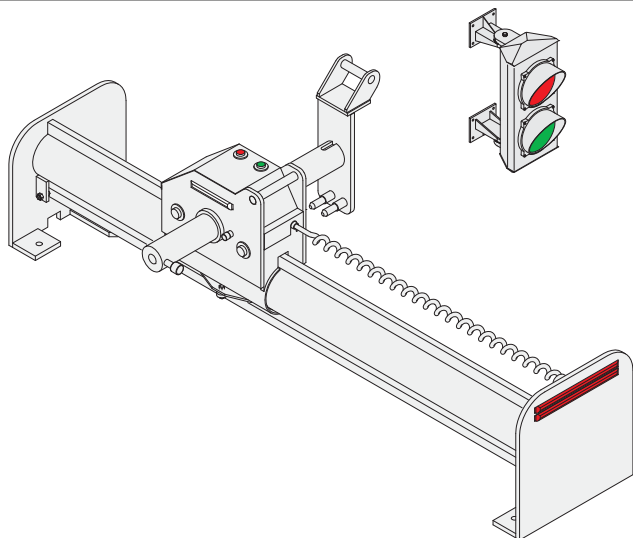
- 4) **Release the restraint system**
 When the dock leveler is back to parking position and the door is closed, the release of the restraint system is done manually.
 When the restraint system is back to its parking position the outside traffic light switches to green. Now the truck can leave and the restraint system is ready for use for the next truck.

Attention:
 Before activating the restraint system, the operator must be sure that the truck is correctly positioned against the buffers.

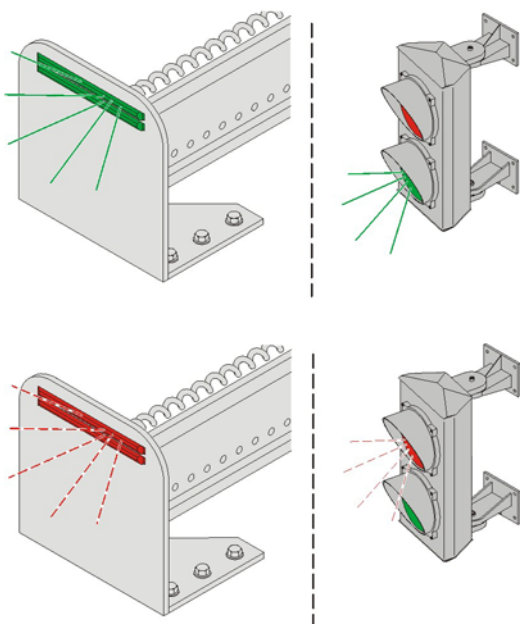


- 3) **Loading operation**
 The sectional door can be opened, and the dock leveler can be connected to the truck.
 The blocking arm cannot be removed until the sectional door is closed or the dock leveler is back in parking position.

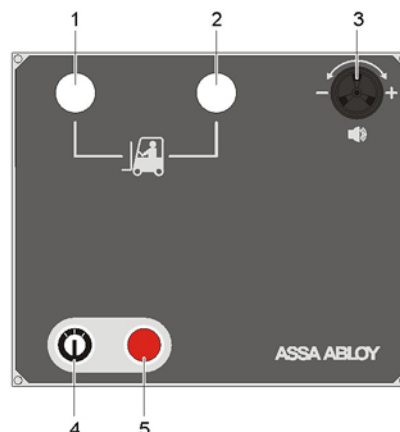
1.2 Overview



1.3 Traffic Lights



1.4 Control Box



- 1) Signal green to indicate leveler or sectional door is released. The truck is docked and blocked, the loading operation can begin.
- 2) Signal red to indicate leveler or sectional is blocked and the truck is not in place.
- 3) Beeper, adjustable in noise level.
- 4) Key switch for service.
- 5) Signal red when the key switch for service is activated.

1.5 Standard

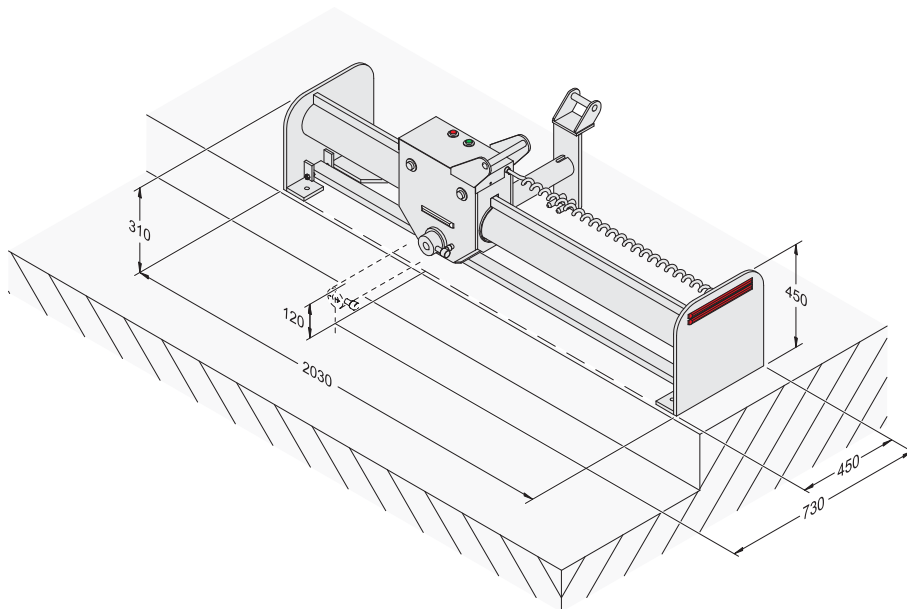
Restraint force	100kN
Standard Cable length	Control box cable 15,0 m Sectional door sensor cable 2,5 m Dock leveler sensor cable 15,0 m
Traffic light	Integrated on the unit
Interlocking	Sensor for sectional door Sensor for dock leveler

1.6 Options

Traffic light	Additional outside with 12,0 m cable
Equipment	Parking guides cast in concrete installation Parking guides bolted installation

2.3 Dimensions H400

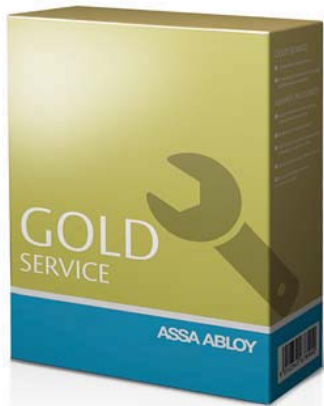
Suitable for installation on a yard with a concrete step of about 200 to 400 mm.



3. Technical Specifications

Power supply	230V 1-phase
Power	10 Amps
Control	24V DC
Overall length, width and height	2030 mm x 750 x 750 mm
Weight	180 kg
Wheel blockage height	Approx. 400 - 450 mm

4. Service you can rely on



Gold

The ultimate protection

With full coverage, Gold Service enables you to plan and budget your expenses annually.

- Spare parts for emergency calls
- Labor and travel costs for emergency calls
- Replacement of components according to preventive maintenance schedule and to fulfill legislative and safety requirements



Silver

Added advantages

With cover for all service calls during business hours, Silver Service offers you peace of mind.

- Labor and travel costs for emergency calls
- Preventive maintenance



Bronze

Scheduled Service

With scheduled on site visits, Bronze Service means you know that your doors and docking systems will be regularly serviced and inspected.

- Preventive maintenance

Included in all packages

1-4 scheduled maintenance visits per year	24/7 priority service hotline and fast response	Safety, compliance and quality control checks	Documentation reports provided on site
---	---	---	--

Expert service you can rely on

A healthy business enjoys a steady flow of goods, services and people through its entrances every day. But heavy traffic puts entrances under pressure as every component works to keep them running.

ASSA ABLOY Entrance Systems offer the industry's most complete, flexible service solutions. Because even something as robust and well-engineered as an ASSA ABLOY door or docking system needs to be serviced to stay in great working order.

Pro-active care packages

An ASSA ABLOY service agreement gives you service you can rely on. We have specialized local service technicians on call to take care of your service needs. Equipped with a wide range of spare parts and expertise, to keep your industrial doors and docking systems running.

With an ASSA ABLOY service agreement you can ensure reliable, safe and sustainable operations at every entrance under your agreement, including doors and docking systems, independent of brand.

ASSA ABLOY e-maintenance™ (optional add-on)

For an online overview of your entrance systems and history, add ASSA ABLOY e-maintenance™ to your service package for:

- Easy access to real-time data on all your doors
- Planning, order and service information
- Overview that helps you control lifecycle costs

Index

C

Control Box6

Copyright and Disclaimer Notice2

D

Description4

Dimensions7

Dimensions H4008

Dimensions H507

Dimensions H50 XL7

M

Mode of operation4

O

Options6

Overview6

S

Service you can rely on 10

Standard6

T

Technical Specifications9

Traffic Lights6

ASSA ABLOY Entrance Systems is a leading supplier of entrance automation solutions for the efficient flow of goods and people. Building on the long-term success of the Besam, Crawford, Albany and Megadoor brands, we offer our solutions under the ASSA ABLOY brand. Our products and services are dedicated to satisfying end-user needs for safe, secure, convenient and sustainable operations.

ASSA ABLOY Entrance Systems is a division of ASSA ABLOY.

ASSA ABLOY
Entrance Systems

assaabloyentrance.com



ASSA ABLOY Entrance Systems

assaabloyentrance.com